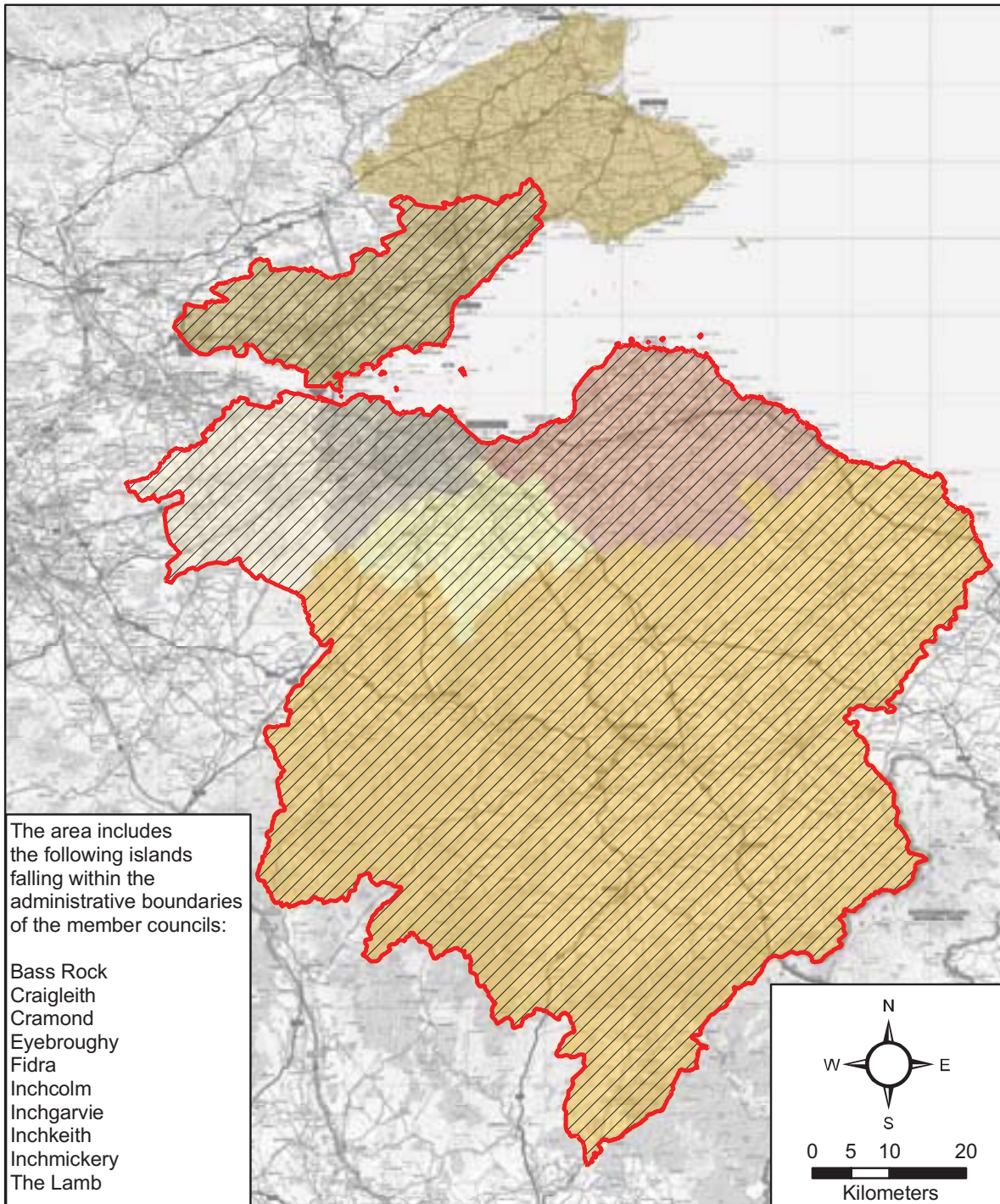


## SESplan and SDP PROJECT FACTSHEET February 2009

|  |   |   |
|--|---|---|
|  |   |   |
| Address  | SESplan, First Floor, Hopetoun Gate,<br>8b McDonald Road, Edinburgh EH7 4LZ                         |   |
| Telephone  | 0131 524 5165   |   |
| Fax  | 0131 524 5151   |   |
| Website  | www.sesplan.gov.uk  |   |
| Email  | contactus@sesplan.gov.uk  |   |
|  |   |   |
| Team Contact   | Linda White<br>SDP Manager  | T 0131 524 5158<br>linda.white@sesplan.gov.uk |
|  |   |   |
| SESplan created                                      | June 2008   |   |
| Member Councils                                      | East Lothian, Edinburgh, Fife, Midlothian,<br>Scottish Borders, West Lothian                        |   |
| Governance   | Political: Joint Committee, Member Councils<br>Officer: Project Board, Dedicated Project Team       |   |
|  |   |   |
| <b>Current SDP Timeline (Approved November 2008)</b> |   |   |
| SDP Boundary Plan submitted                          | September 2008 (map attached)   |   |
| Start of New Plans Regime                            | February 2009   |   |
| Early Consultation Phase                             | May 2009  |   |
| Main Issues Report                                   | Spring 2010   |   |
| Proposed SDP   | February 2011   |   |
| Submitted to Ministers                               | March 2012  |   |
| Examination  | 2012/13   |   |
| Approval   | 2013  |   |
|  |   |   |
| SDP Time Horizon                                     | 20 Years From Approval: 2012 – 2032<br>Detailed: First 12 Years<br>Broad Indication: Years 13 to 20 |   |
| Topic Coverage (provisional)                         | Housing, Economy, Infrastructure including<br>Transport, Retailing, Strategic Greenspace            |   |
|  |   |   |









**Map 4: Edinburgh and South East Scotland  
Strategic Development Plan area**



The area includes the following islands falling within the administrative boundaries of the member councils:

- Bass Rock
- Craigleith
- Cramond
- Eyebroughy
- Fidra
- Inchcolm
- Inchgarvie
- Inchkeith
- Inchmickery
- The Lamb

**Legend**

|   |                                 |   |                  |   |              |
|---|---------------------------------|---|------------------|---|--------------|
|  | Strategic Development Plan area |  | Fife             |  | West Lothian |
|  | East Lothian                    |  | Midlothian       |   |              |
|  | Edinburgh, City of              |  | Scottish Borders |   |              |

Source: The Scottish Government  
 Due to OS licence conditions you/your agent may only use this map for official business dealings with The Scottish Government. If you wish to use the map for other uses, you must first obtain a separate licence from OS.  
 Crown Copyright © The Scottish Government 100020540 2008 Produced 07.10.2008