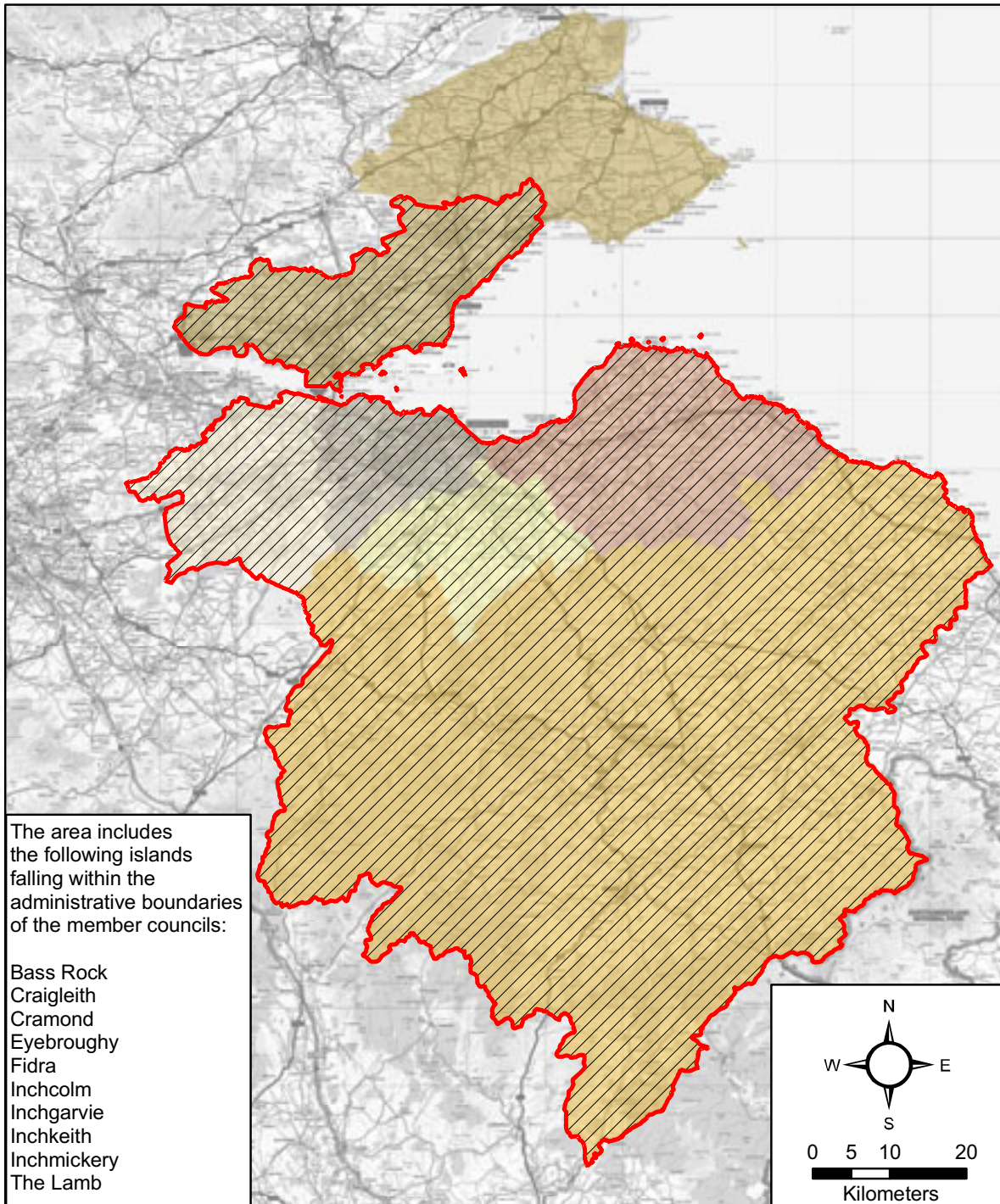


SESplan and SDP PROJECT FACTSHEET December 2008

Address	SESplan, First Floor, Hopetoun Gate, 8b McDonald Road, Edinburgh EH7 4LZ
Telephone	0131 524 5165
Fax	0131 524 5151
Website	www.sesplan.gov.uk
Email	contactus@sesplan.gov.uk
Interim Team Contacts	Ken Tippen T 0131 524 5158 ken.tippen@sesplan.gov.uk
	Keith Miller T 0131 524 5167 keith.miller@sesplan.gov.uk
SESplan created	June 2008
Member Councils	East Lothian, Edinburgh, Fife, Midlothian, Scottish Borders, West Lothian
Governance	Political: Joint Committee, Member Councils Officer: Project Board, Dedicated Project Team
Current SDP Timeline (Approved November 2008)	
SDP Boundary Plan submitted	September 2008 (map attached)
Start of New Plans Regime (tbc)	February 2009
Early Consultation Phase	March 2009 (tbc)
Main Issues Report	December 09
Proposed SDP	December 10
Submitted to Ministers	2011 Q3
Examination	2012
Approval	2012
SDP Time Horizon	20 Years From Approval: 2012 – 2032 Detailed: First 12 Years Broad Indication: Years 13 to 20
Topic Coverage (provisional)	Housing, Economy, Infrastructure including Transport, Retailing, Strategic Greenspace



Map 4: Edinburgh and South East Scotland Strategic Development Plan area



Legend		
	Strategic Development Plan area	
	East Lothian	
	Edinburgh, City of	
	Fife	
	Scottish Borders	
		West Lothian

Source: The Scottish Government

Due to OS licence conditions you/your agent may only use this map for official business dealings with The Scottish Government. If you wish to use the map for other uses, you must first obtain a separate licence from OS.

Crown Copyright © The Scottish Government 100020540 2008

Produced 07.10.2008